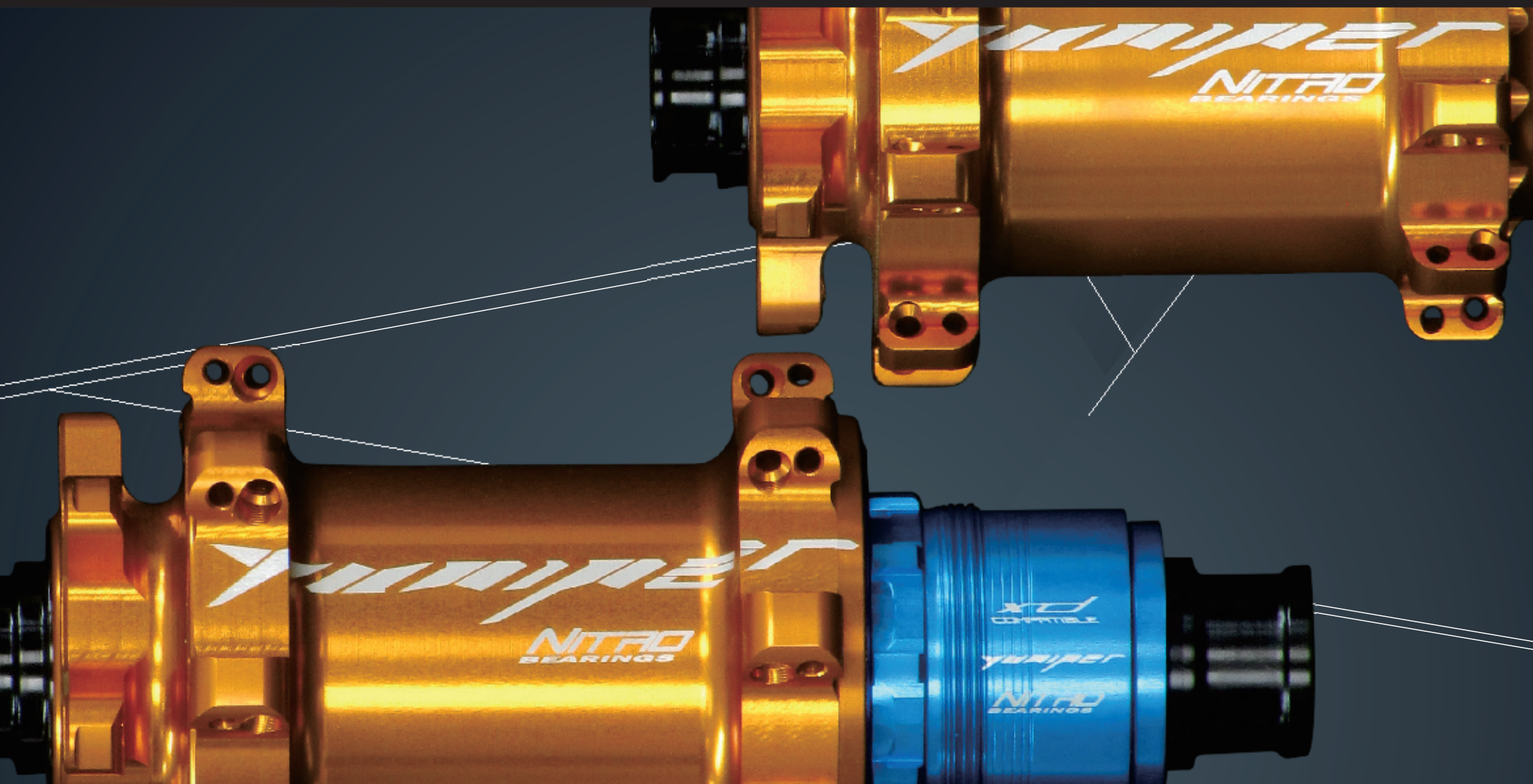


BY PALATINA WORKS
DOPING FOR BIKES

YAMPIER

2019



www.palatina-works.com

The 7th Year

Palatina Works Co., Ltd. has been found several years ago built upon a dream to create a product portfolio of very nice bicycle components. We are now proud to present what we have achieved.

Our products aren't necessarily the lightest ones on the market. This wasn't and will never be our ultimate goal. Our products are supposed to be light and reliable. We want our costumers to be able to enjoy the product on their bicycles.

Everything you see in this catalogue has been developed by Palatina Works. Our products machined by external companies who excel in their specific manufacturing domain.

The approach of Palatina Works Co., Ltd. is different from most of its competitors. We do not strive for high sales figures and high volume products. Price competition is not our speciality, but you will find just the right customer service for you in Palatina Works.

Are you looking for absolute high end products? We strongly recommend you to come and see us.



特別謝謝簡志豪,沒有他的協助及經驗分享,很多事都無法完成!

CONTENT

road bike flanged hubs	page 4
road bike straightpull hubs	page 5
road bike disc hubs	page 6
MTB straightpull hubs	page 7
BOOST straightpull hubs	page 8
straight radial and lefty hubs	page 9
MTB flanged hubs	page 10
MTB flanged lefty hubs	page 11
BOOST flanged hubs	page 12
hub parts	page 13
bearings	page 14-15
rim and wheels	page 16
rim	page 17-20
headsets	page 21-24
bottom brackets	page 25-27
bar ends	page 28
seatpost clamps	page 29
quick releases	page 30
pulleys	page 31
alloy bolts	page 32-34
Ti-bolts	page 35-36

BEARING DETAILS

BEARING SIZES	FRONT HUB
CODE: 6803-2RS	17 x 26 x 5
	REAR HUB
CODE: 17287-2RS	17 x 28 x 7
CODE: 6803-2RS	17 x 26 x 5
	ALL BEARINGS ARE SEALED

- 16H
- 18H
- 20H
- 5MM AND 15MM
- 2 BEARINGS

Based on the request from the market, we developed road bike flanged hubs. The kicker of these hubs is not only the weight. Our flanges are extra beefed up in order to be strong enough for low number of spokes. Front hubs are drilled with 16, 18 or 20 holes. The rear hub is available with 21 (7+14), 24 (12+12 and 8+16) drills. 17mm axles are used on the front and on the rear hub. Hence, the front hub can be equipped as well with a 12 or 15mm axle (the weight would be starting from 81g then). The rear hub can be configured to be mounted with 5mm quick releases or 12mm through axles.

PRODUCT DETAILS

WEIGHTS	FRONT	REAR
NORMAL BEARING	87G	190G
CERAMIC BEARING	85G	186G
HUB TYPE	5MM	5MM

PRODUCT DESCRIPTION

FOR 21 AND 24 SPOKES

SHIMANO AND CAMPY

4 BEARINGS



PRODUCT DETAILS

WEIGHTS	FRONT	REAR
NORMAL BEARING	73G	178G
CERAMIC BEARING	72G	173G
HUB TYPE	5MM	5MM

- 16H
- 18H
- 20H
- 5MM AND 15MM
- 2 BEARINGS

- FOR 21 AND 24 SPOKES
- SHIMANO AND CAMPY
- 4 BEARINGS

PRODUCT DESCRIPTION

With the experience gained on our MTB hubs, we now launched our range of road-bike hubs. We managed to build the front hub below 75g and the rear hub below 180g. The front hub is available for 16, 18 or 20 radial spokes. The rear hub has on the drive side a straightpull solution, the other side has a radial spoke pattern.

Our spoke configuration is:

21 spokes (7 on the non-drive side - 14 on the drive side) and
24 spokes (12 + 12) or 24 spokes (16 + 8)

17mm axles are used on the front and on the rear hub. Hence, the front hub can be equipped as well with a 5mm QR or 12 or 15mm axle (the weight would be starting from 68g then). The rear hub can be held by 5mm quick releases or can be configured to 12mm through axles.



YUNIPER

PRODUCT DETAILS

WEIGHTS	FRONT	REAR
NORMAL BEARING	84G	188G
CERAMIC BEARING	82G	184G
HUB TYPE	15MM	12MM



- 24H
- 5MM
- 12MM
- 15MM



PRODUCT DESCRIPTION

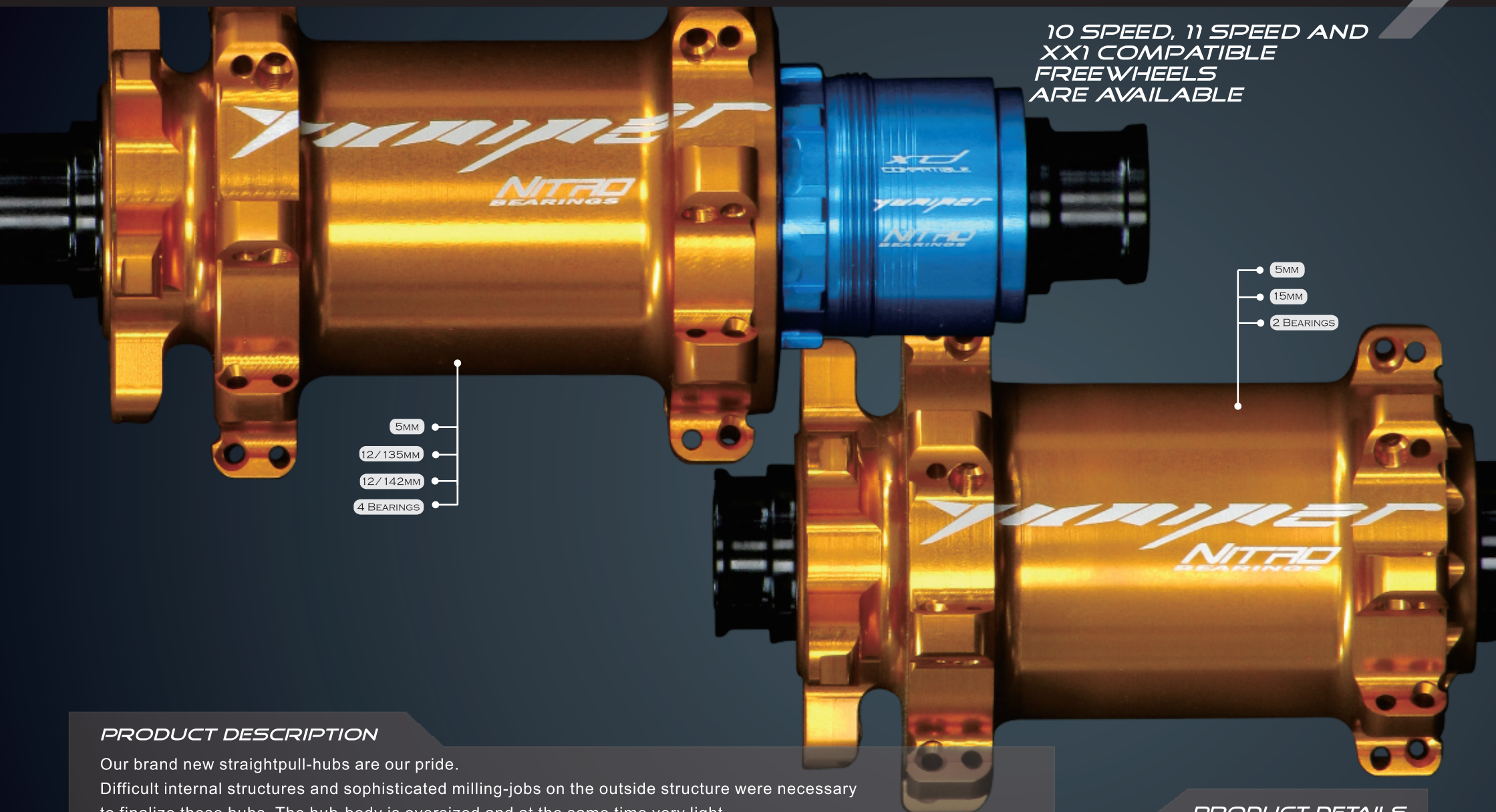
Road bike disc hubs need to be designed extremely thoughtful to handle the load of the wheel on only 24 spokes. Our solution is a straight pull spoke pattern on the front hub paired with a straight / radial spoke pattern on the rear of the hub.

Various axle dimensions are requested for road bike disc hubs. Please see the description in pointers for further details.

The weight of the hubs are attractive too. Like other hubs offered by Palatina Works, the hubshells are made out of 2D forging blanks, which are then precisely machined in order to obtain light but very strong hubs.



10 SPEED, 11 SPEED AND
XX1 COMPATIBLE
FREEWHEELS
ARE AVAILABLE



PRODUCT DESCRIPTION

Our brand new straightpull-hubs are our pride.

Difficult internal structures and sophisticated milling-jobs on the outside structure were necessary to finalize these hubs. The hub-body is oversized and at the same time very light.

The spoke holes are drilled with an angle in order to give the spokes a direction for 3 cross lacing. The hubs are available with 28 and 32 holes.

Both hubs have bearings which are light and strong enough, that the hubs can be used on Cross-Country bikes.

We offer various conversion-kits to make the hubs compatible to fit to all major standards.

PRODUCT DETAILS

WEIGHTS E.G.*	FRONT	REAR
NORMAL BEARING	108G	217G
HUB TYPE	15MM	12MM

STRAIGHTPULL BOOST HUBS



PRODUCT DESCRIPTION

Boost hubs have wider flanges, which give spokes a less steep angle to the rim and by consequence, stiffer wheels can be built. This effect especially pays out on 29 inch wheels. Due to our previous experience of producing the conventionally dimensioned straightpull MTB hubs, we were able to design Boost hub versions which come with an attractive weight compared to hubs offered by our competitors. Our Boost hubs are available with 28 and 32 holes.

PRODUCT DETAILS

WEIGHTS E.G.*	FRONT	REAR
NORMAL BEARING	108G	212G
HUB TYPE	15MM	12MM

28H AND 32H

110MM



STRAIGHT RADIAL BOOST STRAIGHT RADIAL 100MM



- 28H AND 32H
- 6803-2RS
- 100MM
- BOOST

STRAIGHTPULL LEFTY 1.0 LEFTY 2.0



- 28H AND 32H
- 6802-2RS
- 6805-2RS

PRODUCT DETAILS

WEIGHTS	100MM/ 15	BOOST
NORMAL BEARING	98G	103G
HUB TYPE	STRAIGHT RADIAL	

PRODUCT DESCRIPTION

Our MTB front hub special includes:

- Straight Radial front hubs for all kind of axle systems and for 100mm axle widths as well as the BOOST standard.

The design of a Straight Radial hubshell enables us to drop the weight further without sacrificing stability and reliability.

The front hub weight starts below 100g.

Hole counts are 28 and 32.

PRODUCT DETAILS

WEIGHTS	LEFTY 1.0	LEFTY 2.0
NORMAL BEARING	105G	109G

PRODUCT DESCRIPTION

Our Straightpull hubs are available for the Lefty 1.0 and Lefty 2.0 standards.

We are using 6805 and 6802 bearings in order to keep the weight of the hubs under control.

Lefty 1.0 and Lefty 2.0 hubs are available with 28 and 32H.



FLANGED MTB HUBS

- 5MM
- 12/135MM
- 12/142MM
- 4 BEARINGS

PRODUCT DESCRIPTION

Hubs are probably one of the most difficult parts on a bike. Palatina Works designed a lightweight Cross Country Disc Hub-set. Weight savings on this hubset are not realized by reducing the diameter of the axles and the size of the bearings. Some hub manufacturers go this way, in order to built light hubs. On our hubs, all parts are well dimensioned and built to last. Hole counts are 24, 28 and 32H. Another key feature of the hub is, that it can be easily disassembled and serviced. Weight starts from: 113g (front) and 219g (rear).

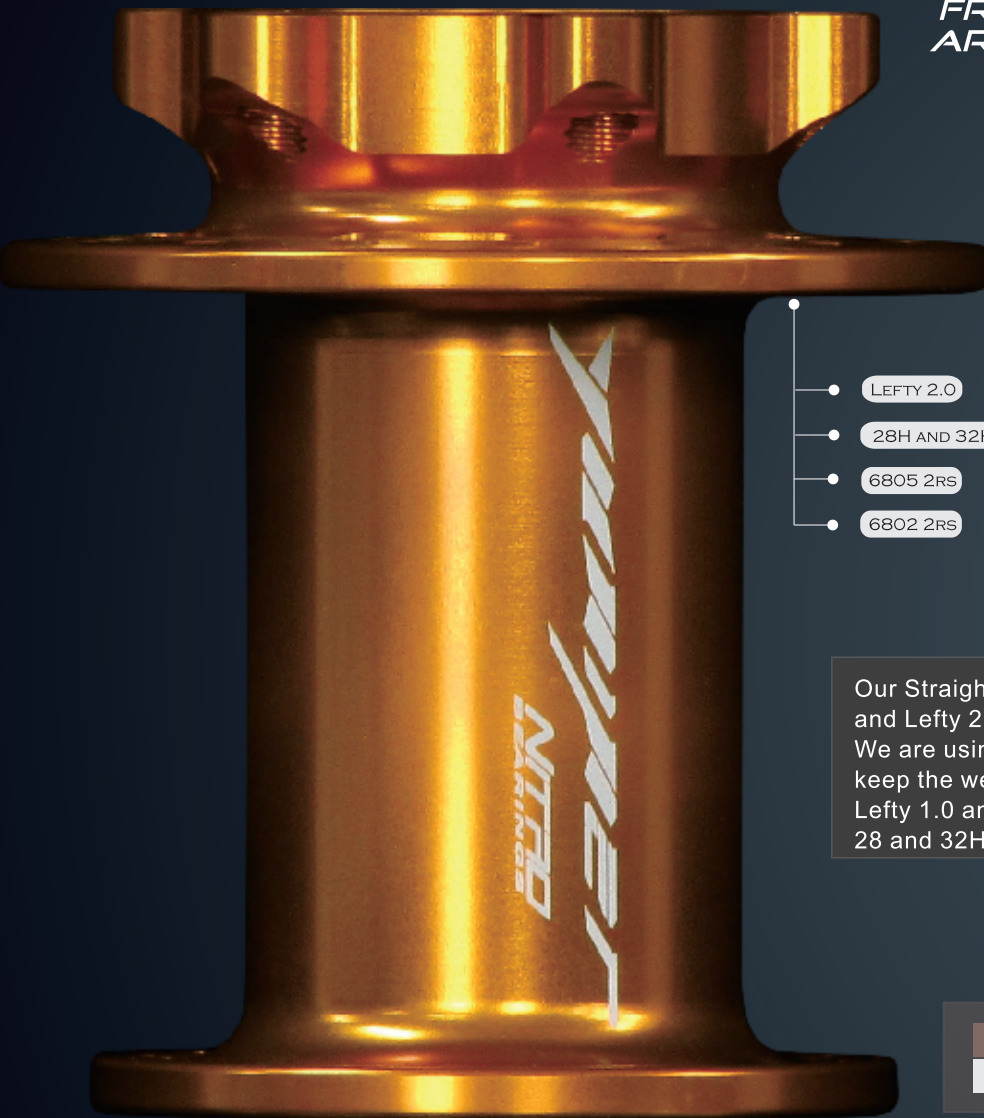
PRODUCT DETAILS

WEIGHTS E.G. *	FRONT	REAR
NORMAL BEARING	113G	219G
AXLE TYPE	15MM	12MM

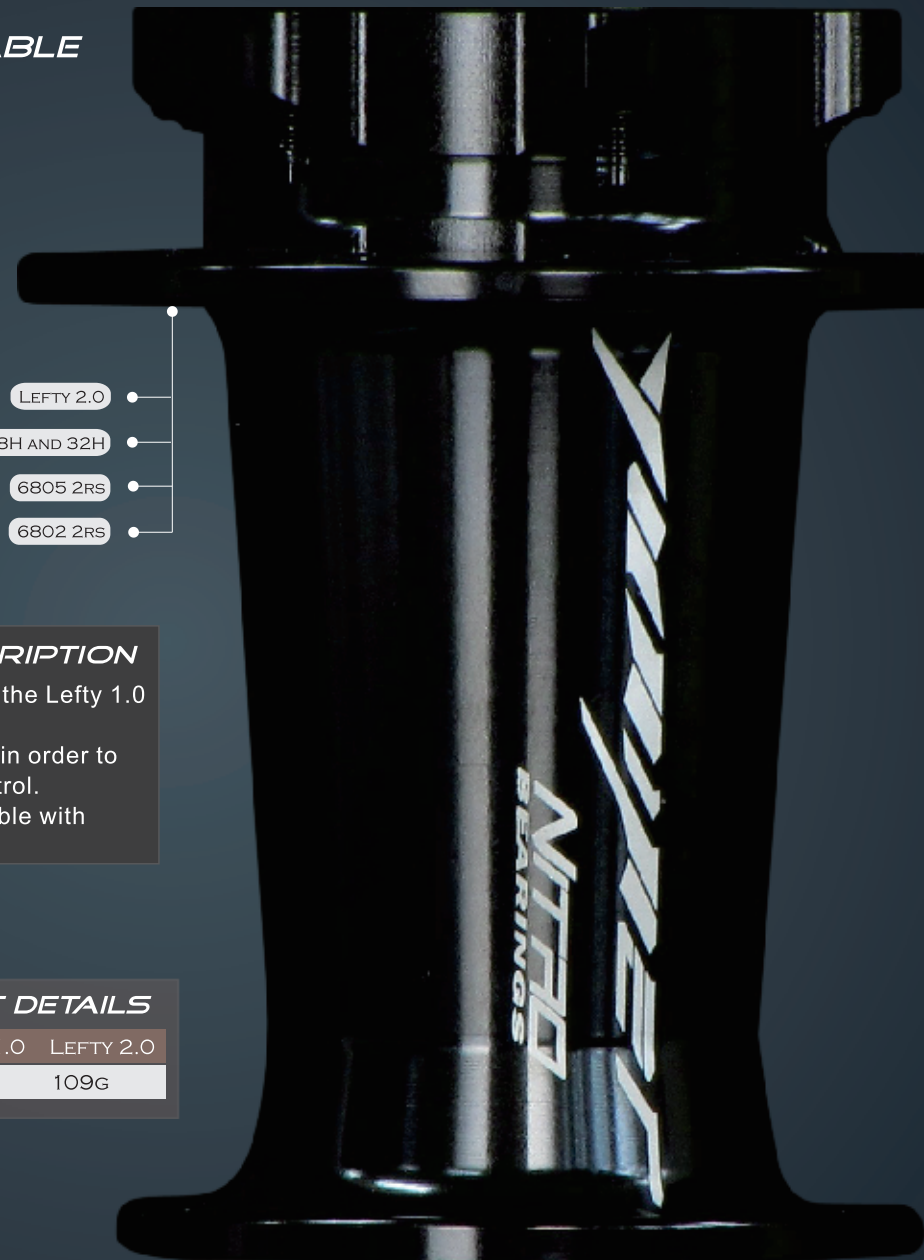
10 SPEED, 11 SPEED AND
XX1 COMPATIBLE
FREEWHEELS
ARE AVAILABLE

- 5MM
- 9MM
- 15MM
- 2 BEARINGS

**LEFTY COMPATIBLE
FRONTHUBS
ARE ALSO AVAILABLE**



- LEFTY 2.0
- 28H AND 32H
- 6805 2RS
- 6802 2RS



- LEFTY 2.0
- 28H AND 32H
- 6805 2RS
- 6802 2RS

PRODUCT DESCRIPTION

Our Straightpull hubs are available for the Lefty 1.0 and Lefty 2.0 standards. We are using 6805 and 6802 bearings in order to keep the weight of the hubs under control. Lefty 1.0 and Lefty 2.0 hubs are available with 28 and 32H.

PRODUCT DETAILS

WEIGHTS	LEFTY 1.0	LEFTY 2.0
NORMAL BEARING	106G	109G

12

YUMIPET

FLANGED MTB BOOST HUBS



10 SPEED, 11 SPEED AND
XX1 COMPATIBLE
FREEWHEELS
ARE AVAILABLE



- BOOST
- 28H AND 32H
- 6803 2RS
- 17287 2RS

- 28H AND 32H
- 6803-2RS
- BOOST

PRODUCT DETAILS

WEIGHTS E.G. *	FRONT	REAR
NORMAL BEARING	113G	215G
AXLE TYPE	BOOST	BOOST

FREEWHEELS AND AXLES - EVERYTHING FITS EVERYWHERE

Campy driver



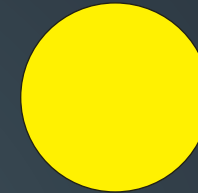
11 speed Shimano driver



XX1/XD driver



Microspline compatible Driver
in preparation



5mm QR Axle



15mm Axle



135/5 QR Axle



142/12 Axle

PRODUCT DETAILS

Compatible to:	Everything fits everywhere
11s speed driver:	2x 6803 bearings @ 52g (with pawls and seals)
XD driver:	2x 6803 bearings @ 48g (with pawls and seals)
Campy driver:	2x 6803 bearings @ 50g (with pawls and seals)
5mm front axle:	28g with sidecaps - 17mm bearing seats
15mm front axle:	25g with sidecaps - 17mm bearing seats
135mm rear axle:	46g with sidecaps - 17mm bearing seats
142mm rear axle:	41g with sidecaps - 17mm bearing seats

NITRO

BEARINGS



PRODUCT DESCRIPTION

Bearings are a very small part of your bike, but play one of the biggest roles in terms of its performance.

The life expectancy of a bicycle component is highly correlated with the life-time of the bearing, which is used in the product.

With our experience, we are able to offer a bearing solution which lasts longer than a standard bearing.

The black surface treatment on the Yuniper NITRO-bearings makes them less prone to rust. Improved seals reduce the probability of water and humidity getting into the bearing. Furthermore, we used high end grease which protects the inner structure of the bearing and assures a very good lubrication. Internal clearances and accuracy classes are no foreign words to us.

Our Yuniper NITRO-bearings are available in a ceramic version as well.

Please inform us, if you wish your components to be equipped with our black Yuniper NITRO-bearings.

BEARINGS

**NITRO
BEARINGS**



PRODUCT DESCRIPTION

Our standard bearing sizes are listed below.
If you are looking for other bearings than listed here,
please appoint the requested dimensions to us.

PRODUCT DETAILS

BEARING CODE	DIMENSIONS IN MM	COMMONLY USED FOR
689 - 2RS	9 x 17 x 5	PULLEYS
699 - 2RS	9 x 20 x 6	PULLEYS
6900 - 2RS	10 x 22 x 6	HUBS
6801 - 2RS	12 x 21 x 5	HUBS
6901 - 2RS	12 x 24 x 6	HUBS
6802 - 2RS	15 x 24 x 5	HUBS
6902 - 2RS	15 x 28 x 7	HUBS
6803 - 2RS	17 x 26 x 5	HUBS
17287 - 2RS	17 x 28 x 7	HUBS
6903 - 2RS	17 x 30 x 7	HUBS
6704 - 2RS	20 x 27 x 4	HUBS
6804 - 2RS	20 x 32 x 7	HUBS
22378 - SRAM	22 x 37 x 8 x 11.5	BOTTOM BRACKET
24377 - 2RS	24 x 37 x 7	BOTTOM BRACKET
6805/7 - 1RS	25 x 37 x 7	BOTTOM BRACKET
6805/6 - 1RS	25 x 37 x 6	BOTTOM BRACKET
6905 - 2RS	25 x 37 x 9	BOTTOM BRACKET
29407 - 2RS	28.99 x 40 x 7 - 2RS	DUB BOTTOM BRACKET
6806 - 2RS	30 x 42 x 7	BOTTOM BRACKET
6807 - 2RS	35 x 47 x 7	BOTTOM BRACKET
ACB 41	30.15 x 41.00 x 6.5 x 45° x 45°	HEADSET
ACB 41 H7	30.15 x 41.00 x 6.5 x 45° H7	HEADSET
ACB 418 H6.5	30.15 x 41.80 x 6.5 x 45° x 45°	HEADSET
ACB 418 H8	30.50 x 41.80 x 8 x 45° x 45°	HEADSET
ACB 468	34.10 x 46.80 x 7 x 45° x 45°	HEADSET
ACB 489	37.00 x 48.90 x 6.5 x 45° x 36°	HEADSET
ACB 518	40.00 x 51.80 x 45° x 45° H 8	HEADSET
ACB 520	40.00 x 52.00 x 45° x 45° H 8	HEADSET
EN 543 - 2RS	1 9/16" x 2" x 9/32"	CANNONDALE
EN 543 - 45°	40.00 x 50.80 x 45° H 7	CANNONDALE



PRODUCT DESCRIPTION

The wheelsets are built with our lightweight hubs and light rims in combination with lightweight spokes - on request with the spokes of your choice.

The wheels are handbuilt by specialists for lightweight and reliable wheel solutions.

The light rims reduce inertia and give a dynamic feeling.

Choose from the hub and rim selection in this catalogue.

We realize your wheel in the colour combination of your choice.



EXAMPLES

EXAMPLE ROAD	FRONT	REAR
HUB:	20H	24H
SPOKES:	LIGHT	LIGHT
RIM:	CARBON TUBULAR 27 x 35MM	
WEIGHT:	522G	645G
WHEELSET:	1167G	

EXAMPLES

EXAMPLE 29"	FRONT	REAR
HUB:	QR	QR
SPOKES:	LIGHT	LIGHT
HOLES:	32H	32H
RIM:	EYELETS	EYELETS
WEIGHT:	681G	786G
WHEELSET:	1468G	



palatina

26"

650B

29ER

17

PRODUCT DESCRIPTION

Who has got a light rim? Palatina Works has! The weight in this catalogue is the reality and not a weight we dream of.

The Alpha rim is a disc-only version which is designed for Cross Country. It has tyre pressure limits and weight limitations for the rider - for details, check our webpage or contact us directly. The rim profile has been designed to be tubeless ready. Weight starts from 335g (26 inch - no Eyelets)

The Beta rim has a wider profile, which is more rigid and can be exposed to rougher grounds.

The rim is designed for Cross Country and All Mountain Light.

The Beta rim has as well pressure limits for the tyre and weight limitations for the rider.

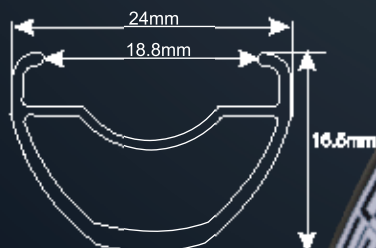
Weight starts from 360g (26 inch - no Eyelets)



Tubeless Rim Tape

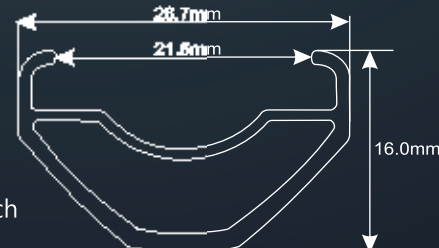
Easy to install, very good bonding agent
width: 23mm, 26mm and on request
length: 5m, 50m and on request

Alpha Profile

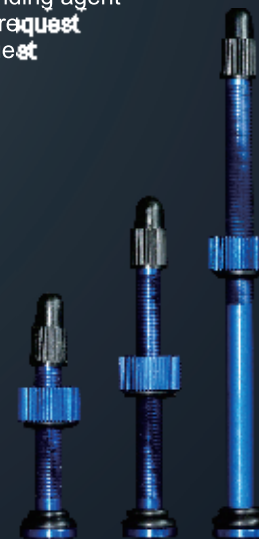


335g in 26 inch
360g in 650B
380g in 29 inch

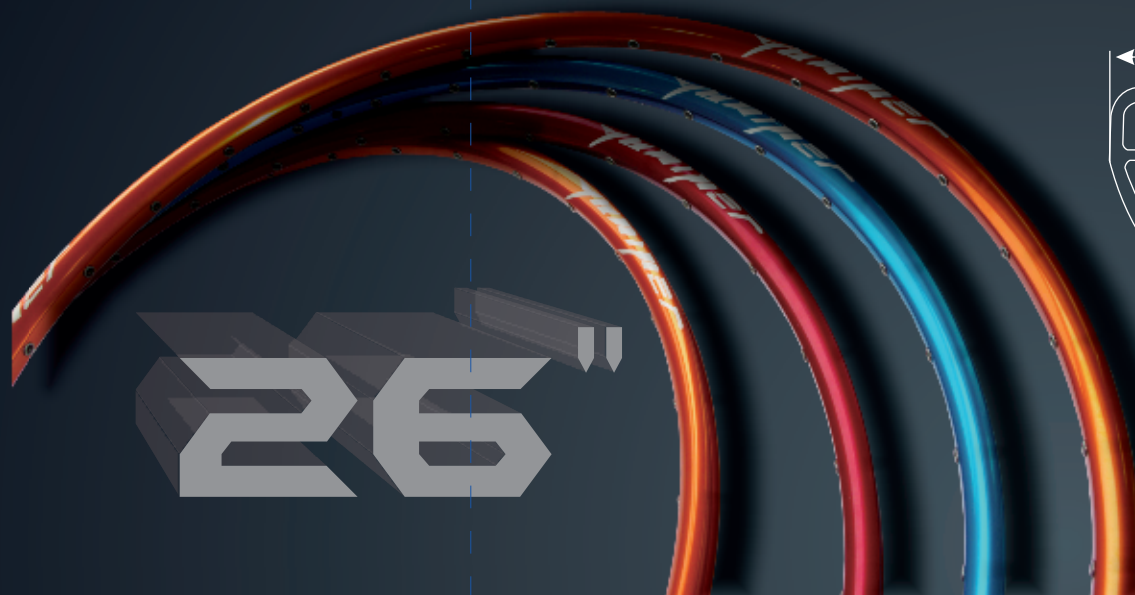
Beta Profile



360g in 26 inch
380g in 650B
400g in 29 inch

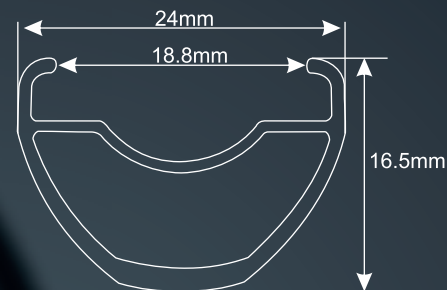


Valves for tubeless rims
made out of 7075 T6 alloy
5g / 6g / 7.5g piece
height: 50mm, 70mm and 110mm

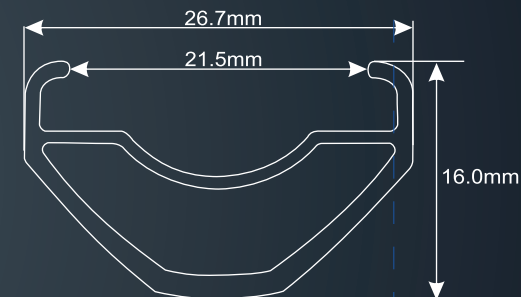


26"

Alpha Profile



Beta Profile



PRODUCT DESCRIPTION

Who has got a light rim? Palatina Works has! The weight in this catalogue is the reality and not a weight we dream of.

The Alpha rim is a disc-only version which is designed for Cross Country. It has tyre pressure limits and weight limitations for the rider - for details, check our webpage or contact us directly. The rim profile has been designed to be tubeless ready. Weight starts from 335g (26 inch - no Eyelets)

The Beta rim has a wider profile, which is more rigid and can be exposed to rougher grounds. The rim is designed for Cross Country and All Mountain Light.

The Beta rim has as well pressure limits for the tyre and weight limitations for the rider.

Weight starts from 360g (26 inch - no Eyelets)

PRODUCT DETAILS

Rim Data	Alpha Profile	Beta Profile
Holes:	28 / 32	28 / 32
Eyelets:	Yes / No*	Yes / No*
Colours	Anodized or Painted	
Joint:	Welded Joint:	Welded Welded
Weight (anodized):	340g / 335G	365G / 360G
	*Painted Rims only with Eyelets	

DISC RIMS IN 650B



650B

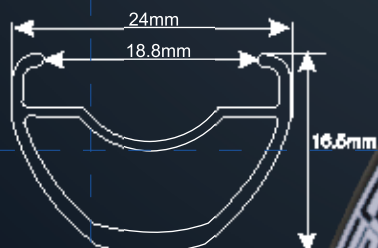
PRODUCT DESCRIPTION

650B rims - the new standard
Since last year, the 650B standard has been used by a significant number of frame manufacturers. The new standard attracts more and more attention. For sure, Palatina Works offers this standard with both rim profiles - The Alpha Profile and the Beta Profile.

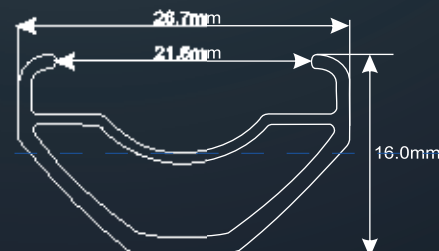
32 PRODUCT DETAILS

Rim Data	Alpha Profile	Beta Profile
Holes:	28 / 32	28 / 32
Eyelets:	Yes / No*	Yes / No*
Colours	Anodized or Painted	
Joint:	Welded	Welded Welded
Weight (anodized):	365g / 360G	385G / 380G
*Painted Rims only with Eyelets		

Alpha Profile



Beta Profile



20

YAMMER

DISC RIMS IN 29 INCH



29 ER

PRODUCT DESCRIPTION

Both of our rim profiles are available in 29 inch, as well. In order to ensure the strength of the wheelset, we only offer 32 holes on 29 inch rims. Weight starts from 380g (Alpha profile - no Eyelets)

PRODUCT DETAILS

Rim Data	Alpha Profile	Beta Profile
Holes:	32	
Eyelets:	Yes / No*	Yes / No*
Colours	Anodized or Painted	
Joint:	Welded Joint:	Welded Welded
Weight (anodized):	385g / 380G	405G / 400G
	*Painted Rims only with Eyelets	



HEADSETS & EXPANDER

R3CORD

YUNIPER R3CORD is the all new product line of Palatina Works. We managed to reduce the weight again to a record low.

R3CORD



PRODUCT DETAILS

Compatible to:	Carbon, alloy and steel shafts
Weight R3CORD:	11.3g for the expander itself
Weight:	2.4g for the countersunk alloy bolt
Weight:	3.7g for the full carbon topcap
Installation:	min shaft ID: 21mm to max shaft ID: 25.2mm
Material:	7075 T6 alloy

PRODUCT DESCRIPTION

With our new R3CORD line, we managed to further reduce the weight of our existing light products. The Expander is a good example. The main body had a weight of 11.3g only. The adjustment range reaches from 21mm to 25.2mm. The expander is designed to work on different fork shaft materials such as steel, alloy and last but not least carbon.

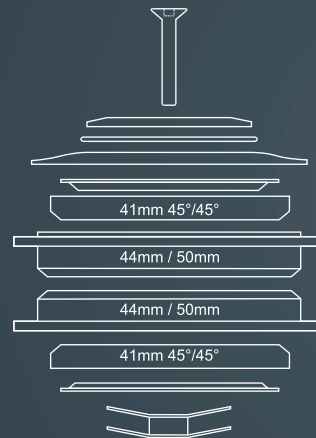
We are able to offer even lighter headsets than before. With our experience, we were able to get our headsets to a new level, the R3CORD level. We use lighter bearings, which have been tailor made for us and we were able to get the alloy parts of the headset on a diet to make them slimer and lighter as before.

PRODUCT DETAILS

Compatible to:	44/50mm and 44/55mm and 44/56mm head tubes
Weight:	ZS 44 - 28.6 / ZS 44 - 30.0 @ 49g
Weight:	ZS 44 - 28.6 / ZS 55 - 40.0 @ 60g
Weight:	ZS 44 - 28.6 / ZS 56 - 40.0 @ 63g
Weight:	4g full carbon topcap
Weight:	2g alloy screw (32mm length, black anodization)
Weight:	4g universal starnut (not for carbon fork shafts)
Bearing type:	Special Nitro angular contact bearings



A3C/AD



PRODUCT DETAILS

Compatible to:	44mm/50mm head tube and 1 1/8 steer
Weight:	63g with ceramic bearings (excl. Topcap, Screw, Starnut)
Weight:	65g with normal bearings (Excl. Topcap, Screw, Starnut)
Weight:	4g full carbon topcap
Weight:	2g alloy screw (32mm length, black anodization)
Weight:	4g universal starnut (not for carbon fork shafts)
Bearing type:	Angular contact bearings

Outside cup diameter is precisely machined for an accurate fit into the headtube.

PRODUCT DESCRIPTION

Headsets: We were able to significantly lower the weight of Semi-Integrated headsets.

(made for 44mm/50mm Headtubes and 1 1/8" Steers)

The headsets are equipped with two 45°x45° durable bearings.

For those who want the ultimate version: ceramic ball bearings available.

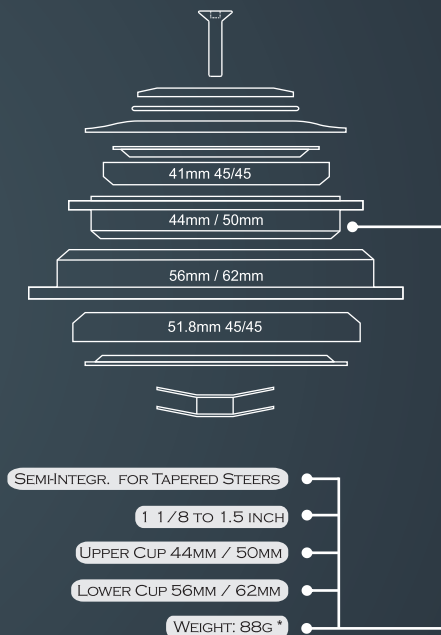
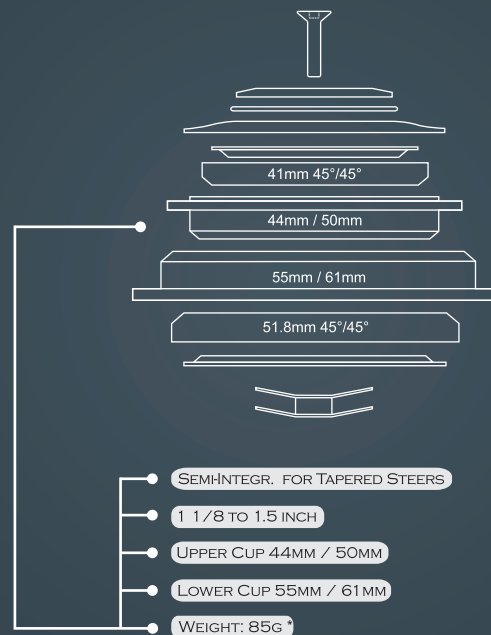
The headsets have lightweight shells and very light top cones. The top cap is made out of full carbon fibre, but a standard alloy version is available too!

Weight starts from 63g.



TAPERED HEADSETS

* Weights without Top Cap, Alloy Bolt and Alloy Star washer which represent 12g.



PRODUCT DESCRIPTION

Two standards for semi-integrated Tapered Headsets exist in the market.

The lower cup can either have a 55mm or 56mm diameter. We offer both standards, as they frequently occur in the market .

Our lightweight design is also applied to the Tapered Headsets where we were able to optimize the dimensions of all parts.

PRODUCT DETAILS 55 MM

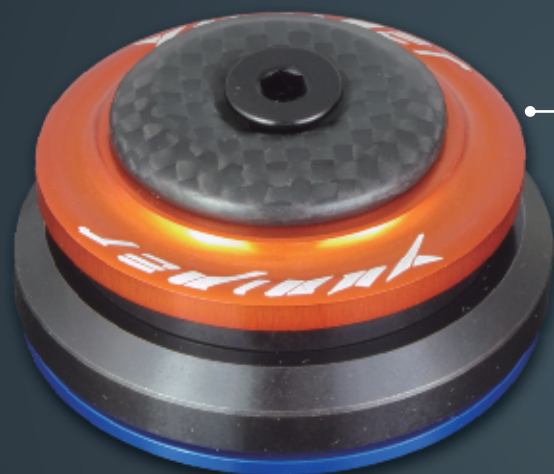
HEADSET DATA:	
UPPER CUP:	44/50MM
LOWER CUP:	55/61MM
BEARINGS:	41MM AND 51.8MM
WEIGHT:	85G

PRODUCT DETAILS 56 MM

HEADSET DATA:	
UPPER CUP:	44/50MM
LOWER CUP:	56/62MM
BEARINGS:	41MM AND 51.8MM
WEIGHT:	88G



DROP IN HEADSETS FOR 1.5 INCH AND 1.25 INCH



INTEGRATED FOR TAPERED

1 1/8 TO 1.5 INCH

UPPER BEARING 41.8MM

LOWER BEARING 46.8MM OR 51.8MM

WEIGHT 63G / 71G



* Weights without Top Cap, Alloy Bolt and Alloy Star washer which represent 12g.

DROP IN HEADSETS

HEADSET DATA:	1.25 INCH	1.5 INCH
UPPER BEARING:	41.8MM 45°	41.8MM, 45°
LOWER BEARING:	46.8MM 45°	51.8MM, 45°
MATERIAL:	7075 T6	7075 T6
WEIGHT:	63G	71G

PRODUCT DESCRIPTION

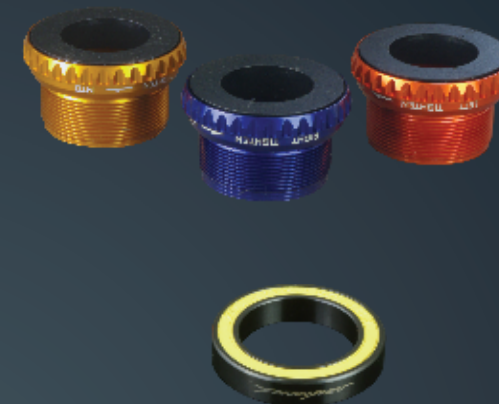
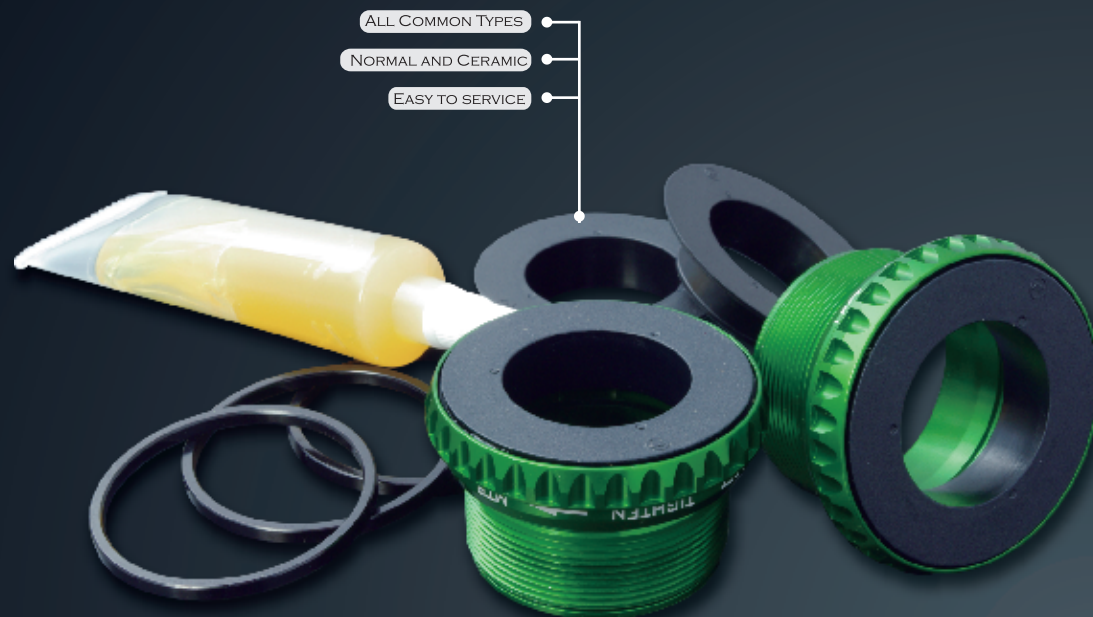
Then, there is a third version of tapered headsets:

The Drop-in headset, based on the FSA-Standard, where the bearing cups are integrated in the frame and the bearings are just dropped in. The upper bearing has an outer diameter of 41.8mm and usually fits to frames with 41.8 to 42.0mm drop diameter.

The lower bearing is available in two different dimensions:

- 46.8mm outer diameter for 1.25 inch tapered steers
- 51.8mm outer diameter for 1.5 inch tapered steers.

The rest of the headset-parts are, as usual, designed to be extremely light.



Equipped with Yuniper NITRO Bearings.

PRODUCT DESCRIPTION

Weight-savings on a Bottom Bracket? Yes, it is possible!

Riders can easily save 40g or more with our BBs made from 2D-Forges 7075 T6 Alloy. After deep analysis of the critical dimensions on a BBs, we came up with our design. Material is only there, where it is needed.

Compatibility Range:

Shimano MTB, Shimano Road, SRAM GXP, FSA MEGAEXO.

The BBs are equipped with durable bearings and a high performance seal design.

For those who want the highest standard possible: ceramic ball bearings are available.

Weight starts from 70g (set).

Patented Design

Two replacement plastic caps and a supplementary grease tube are delivered together with each BB-Set.

PRODUCT DETAILS

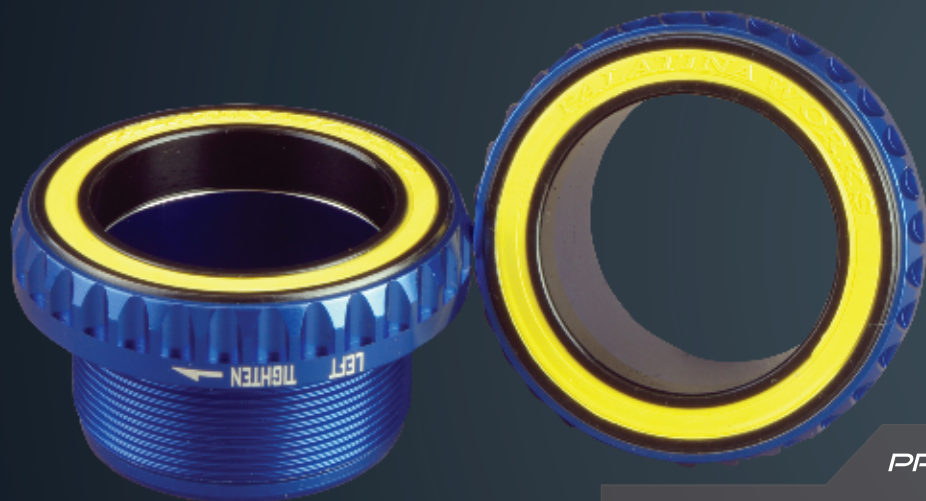
COMPATIBLE TO:	BB-WEIGHT	BB-WEIGHT	SPACER
SHIMANO MTB	72G NORMAL B.	70G CERAMIC B.	3
SHIMANO ROAD	76G NORMAL B.	74G CERAMIC B.	3
SRAM GXP	82G NORMAL B.	80G CERAMIC B.	3
FSA MEGAExo	76G NORMAL B.	74G CERAMIC B.	3

26

BOTTOM BRACKETS BB386

Yuniper

DUB-STANDARD



PRODUCT DETAILS

BB386	
OUTER CODE:	FITS TO BB386 KEYS
BEARING:	30 x 42 x 7
MATERIAL:	7075 T6
WEIGHT:	72 G

PRODUCT DESCRIPTION

The BB386 standard gains more momentum in the market.

We offer 3 versions of BB386.

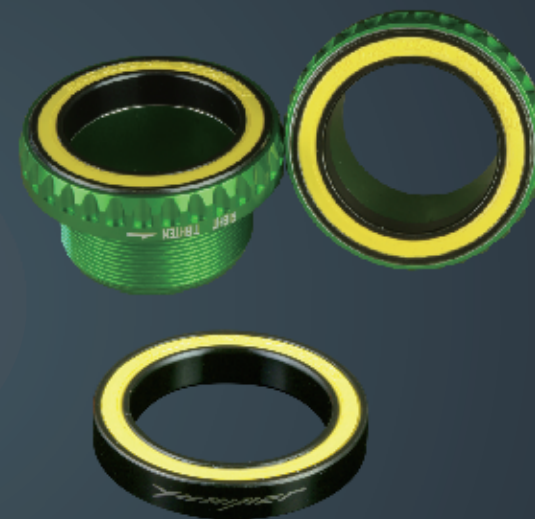
One version which is designed to be used without spacers.

The second version can be used with spacers.

The third version is equipped with additional seal-caps to protect the bearing and the internal structure.

Exact alignment of the bearings to the crank axle and several quality control steps during production.

Assure a high-performance product.



Equipped with
Yuniper NITRO Bearings.

PRODUCT DETAILS

SRAM DUB STANDARD

SRAM DUB STANDARD	
OUTER CODE:	FITS TO BB386 KEYS
BEARING:	28.99 x 40.00 x 7 - 2RS
MATERIAL:	7075 T6
WEIGHT:	70G

BOTTOM BRACKET SOLUTIONS

PF 30

46mm outer diameter for 30mm axles



PRODUCT DETAILS

DATA:	PRESS FIT 30
OUTER DIAMETER:	46MM
BEARING:	YUNIPER NITRO 6806 - 2RS (30x42x7)
AXLE DIAMETER:	30MM
MATERIAL:	PBT+G AND NYLON WASHERS
WEIGHT:	62G



Equipped with
Yuniper NITRO Bearings.

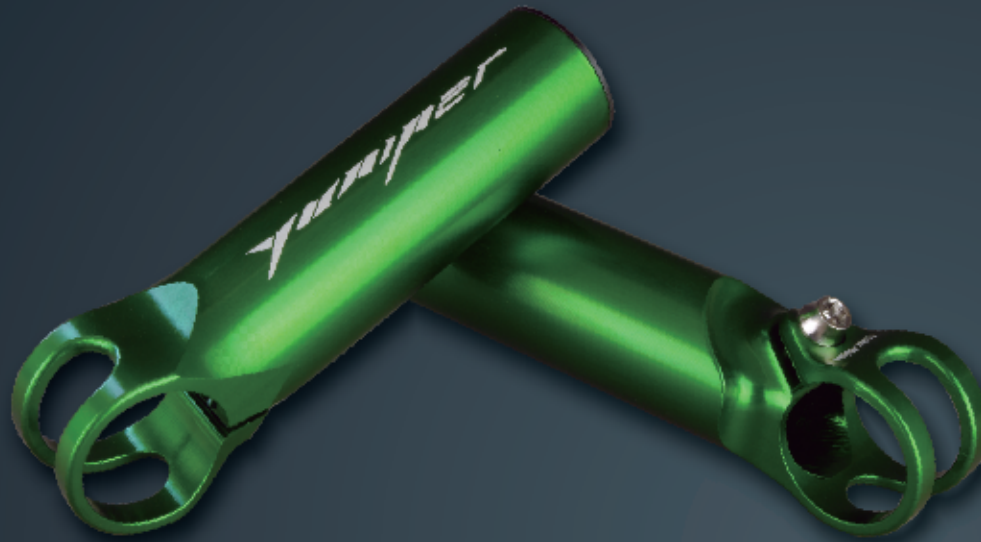
PRODUCT DETAILS

DATA:	BB 86
OUTER DIAMETER:	41 MM
BEARING:	YUNIPER NITRO 6805 - RS (25x37x6)
AXLE DIAMETER:	24MM
MATERIAL:	PBT+G
SEALS:	SPECIAL STRUCTURED SEAL
WEIGHT:	53G

BB 86

41mm outer diameter for 24mm axles





PRODUCT DESCRIPTION

This barend - a masterpiece!

It took quite long to finalize the design and appearance of the barend. Several tests were performed to assure that this pair of barends passes the EN-standards.

Finally, the barend went into mass-production on a 5 axle CNC machine.

The barends come with an oversized 25mm grip diameter and are equipped with titanium bolts.

The weight is fantastic: 43g (pair)

PRODUCT DETAILS

BAREND DESIGNS FOR 22.2MM CLAMPING AREA

INWARD SLOPE:	10°
LENGTH:	105MM
MATERIAL:	7075 T6 (FULLY CNCd)
WEIGHT:	43G (PAIR)

SEATPOST CLAMP EXTENDED



SEATPOST CLAMP ULTRALIGHT



PRODUCT DETAILS

DATA:	SEATPOST CLAMP EXTENDED	
INNER DIAMETER:	30.0 - 31.8 - 34.9 - 36.0 - 36.4 - 38.2MM	
HIGHT:	12MM	
BOLT:	TITANIUM (OHTER BOLTS ON REQUEST)	
WEIGHT:	30.0MM @ 8.8G	31.8MM @ 9.0G
	34.9MM @ 9.1G	36.0MM @ 9.0G
	36.4MM @ 9.0G	38.2MM @ 9.0G

PRODUCT DETAILS

DATA:	SEATPOST CLAMP ULTRALIGHT	
INNER DIAMETER:	30.0 - 31.8 - 34.9 - 36.0 - 36.4 - 38.2MM	
HIGHT:	10MM	
BOLT:	TITANIUM (OHTER BOLTS ON REQUEST)	
WEIGHT:	30.0MM @ 6.5G	31.8MM @ 6.6G
	34.9MM @ 7.0G	36.0MM @ 6.8G
	36.4MM @ 6.8G	38.2MM @ 6.8G

PRODUCT DESCRIPTION

An optimized Seatpost Clamp!

Several Seatpost Clamps made of carbon fibre are not as light as our fully CNCd solution. Precise machining processes are needed to get a reliable and light clamp.

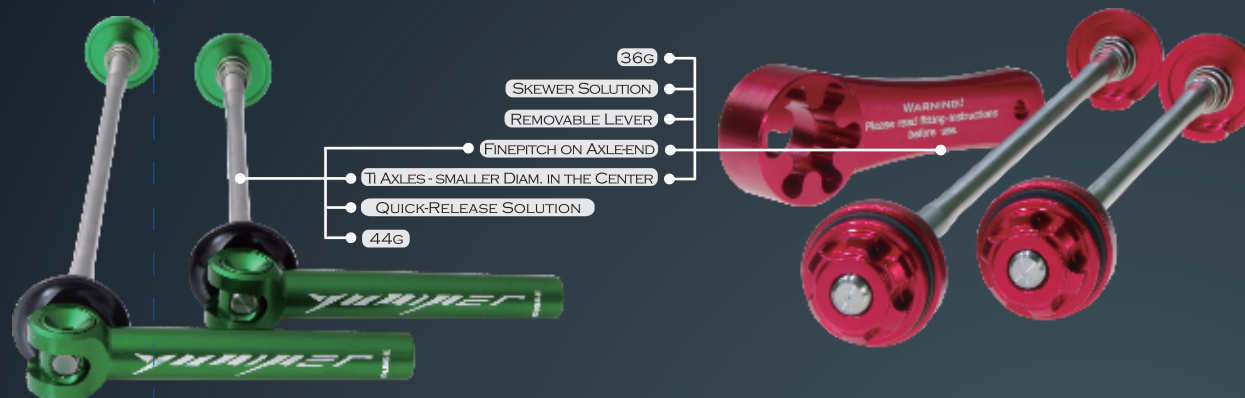
The standard version is equipped with a Ti6Al4V Bolt.

The weight?

Starting from 6.5G for 30.0mm for the Ultralight version up to 9.1G for the extended version in 34.9mm.



QUICK RELEASES & SKEWERS



PRODUCT DESCRIPTION

Question: How was it possible to come up with Quick Releases which are better than the thousands of existing versions?

Answer: It was difficult but possible!

We started to analyze the ratio needed for the quick release lever. The clamping force is key for a good quick release.

A lot of quick releases might look similar, but this one has a thought through geometry, as well.

The titanium axles have a smaller diameter in the center. The caps can be micro-adjusted due to the finepitch thread on the axles.

A top tier material supplier was selected for the axle material.

Compatibility Range: Standard MTB and Road Bike Dimensions.

Weight starts from 44g (Pair).

PRODUCT DETAILS

COMPATIBLE TO:	MTB QR	ROAD BIKE QR	MTB SKEWER	ROAD SKEWER
FRONT:	100MM HUB	100MM HUB	100MM HUB	100MM HUB
REAR:	135MM HUB	130MM HUB	135MM HUB	130MM HUB
BUILT FOR:	MAX: 2x9MM DROPOUTS	MAX: 2x10MM DRO	MAX: 2x9MM DRO	MAX: 2x10MM DRO
WEIGHT:	45G (PAIR)	44G (PAIR)	36G (PAIR)	36G (PAIR)
AXLE MATERIAL:	TI 6AL-4V	TI 6AL-4V	TI 6AL-4V	TI 6AL-4V

PULLEYS

Shimano 10s and
11s compatible



XX1/XD compatible



Also available with black
Yuniper NITRO bearings



PRODUCT DESCRIPTION

Nearly every trading company in Taiwan can offer pulleys.

Firstly, we were not interested in this bike part, but as we had a closer look at this product, we found some room for improvement. Our pulleys have a well defined side play, necessary for a precise shifting process. Pulleys without any freeplay would force the chain to jump on the next cog on the cassette, no matter if a shifting ramp is available or not. In the long run, the cassette would be ruined - even teeth of the cassette might bend.

Smooth shifting processes require that the chain is pressed onto the next cog of the cassette or chainring. The chain should only climb up/down when the shifting-process is triggered by a shifting ramp.

Our patented pulley solution behaves in that way.

Furthermore, the teeth of the pulleys have the correct shape! Please compare the described behaviours with other available solutions.

We bet! You can spot the difference!

PRODUCT DETAILS

PULLEY DATA	
TEETH:	11T (SHIMANO) / 12T XX1 / XD
BEARING:	9 / 17 / 5
SIDEPLAY:	YES
AXLE STRUCTURE:	SEALED
* 10 TEETH ON REQUEST	

ALLOY BOLTS



Notice: Aluminium screws are not recommended for safety critical bicycle parts unless explicitly

PRODUCT DESCRIPTION

Palatina Works offers a wide range of aluminium alloy screws.

The minimum order quantity is low, as we decided carry stock on semi-finished screws.

The commonly requested screw sizes are M5 and M6.

If you need special screws - just let us know. We can evaluate your request.

Anodization colours on customer's request.

ALUMINIUM SCREWS



M5 Bottleage Bolts

3mm Allen Key PW flanged Head

8mm - 12mm rolled thread



M5 Bolt For diff. Applications

4mm Allen Key Cylindric Head

8mm - 40mm rolled thread



M6 Bolt for Diff. Applications

5mm Allen Key PW flanged Head

8mm - 50mm rolled thread



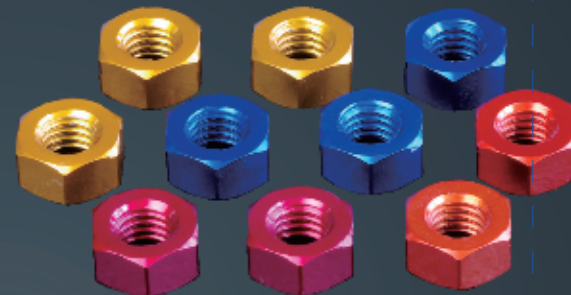
M6 Bolt For Headset Top Caps

4mm Allen Key Counter Sunk Head

36mm rolled thread



SCREW NUTS



▼ WASHERS



PRODUCT DESCRIPTION

Manufacturing techniques: punched, rolled, CNCd and heat-treated.

Material: 7075 T6 (top tier material source)

Optimized head design to realize an appropriate tightening torque.

Exact thread and screw-head alignment.

Extensive screw-length range.

PRODUCT DETAILS

COMPATIBLE TO:	M5	M6
MATERIAL:	7075 T6	7075T6
THICKNESS:	1mm	1mm
EDGES:	45°	45°
DIMENSIONS:	8mm/5.4mm	11mm/6.4mm

Notice: Aluminium screws are not recommended for safety critical bicycle parts unless explicitly authorized.

ALUMINIUM SCREWS

TORX T25

**M6 DIN 912 - Torx T25**

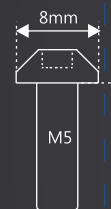
Material: 7075 T6
Tapered head
Thread: M6 x 1.0
Lengths on request.



Available standard lengths (in mm):
10, 12, 14, 16, 18, 20, 25, 30, 35 and 40

**M5 DIN 912 - Torx T25**

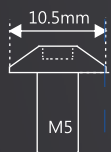
Material: 7075 T6
Tapered head
Thread: M5 x 0.8
Lengths on request



Available standard lengths (in mm):
10, 12, 14, 16, 18, 20, 25 and 30

**M5 - Torx T25**

Material: 7075 T6
Tapered head
Thread: M5 x 0.8
Lengths on request

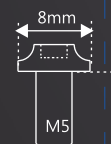


Available standard lengths (in mm): 15

ALLEN KEY

**M5 - Allen Key**

Material: 7075 T6
PW flanged
Thread: M5 x 0.8
Lengths on request



Available standard lengths (in mm):
10 and 15

**M4 - Allen Key**

Material: 7075 T6
Tapered head
Thread: M4 x 0.7
Lengths on request



Available standard lengths (in mm):
10, 13, 16 and 20

ALLEN KEY

**M6 DIN 912 - Allen Key**

Material: 7075 T6
Tapered head
Thread: M6 x 1.0
Lengths on request



Available standard lengths (in mm):
10, 12, 14, 16, 18, 20, 25, 30, 35 and 40

**M5 DIN 912 - Allen Key**

Material: 7075 T6
Tapered head
Thread: M5 x 0.8
Lengths on request



Available standard lengths (in mm):
10, 12, 14, 16, 18, 20, 25 and 40

**M6 - Allen Key**

Material: 7075 T6
PW Flanged
Thread: M6 x 1.0
Lengths on request



Available standard lengths (in mm):
10, 12, 14, 16, 18, 20, 25, 30, 35 and 40

**M5 - Allen Key**

Material: 7075 T6
Cylindric head
Thread: M5 x 0.8
Lengths on request

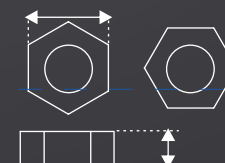


Available standard lengths (in mm):
10, 12, 14, 16, 18, 20, 25 and 40

SCREW NUT

**M5 & M6 Nuts DIN 934**

Material: 7075 T6
Hexagon head
Thread: M5 x 0.8 & M6 x 1
Other sizes on request



Available standard sizes:
Nut for M5 and nut for M6

Notice: Aluminium screws are not recommended for safety critical bicycle parts unless explicitly authorized.

TITANIUM PARTS



PRODUCT DESCRIPTION

During the past years, we gained expertise in titanium part production. Many customer solutions were handled through Palatina Works. The quality of a titanium part is already mainly determined when the raw material is selected.

We use trustworthy material sources, we frequently test our products and we can offer testing services to our customers.

If you want to compare us with other competitors, just start with the appearance of our parts. Due to the material selection and the precise CNC-process, our products have an absolutely shiny surface.

Check our products for symmetry. For example: The head of our screws is perfectly centered.

Titanium parts are generally expensive goods. This is why it is even more important to use reliable manufacturers to get these parts produced.

We generally recommend to fully CNC titanium parts; but rolled threads and punched screw heads are available options as well.

TITANIUM SOLUTIONS



Torx T25



- T25 Rotor Bolts
- Perfectly Fully CNCd head
- 8mm - 12mm Cut M5 Thread



M5 Allen Key



- M5 Screws
- Fully CNCd Head
- CNCd or Rolled Thread



M6 Allen Key



- M6 Screws
- CNCd or Punched Head
- CNCd or Rolled Thread



PRODUCT DESCRIPTION

Palatina Works Co., Ltd. offers the nicest Titanium Screws. We are not striving to offer our customers the cheapest solution. Our aim is to offer Ti-Bolts which have a very nice appearance and conquer the customers' hearts by the brilliant machining job. Check it out and compare! You will have difficulties to find more precise solutions with a better appearance. Manufacturing Techniques: CNCd or punched & rolled Material: Ti 6Al-4V (top tier material source) Optimized head design to realize a perfect lightweight screw. Exact thread and head alignment. Extensive screw-length range.

PRODUCT DETAILS

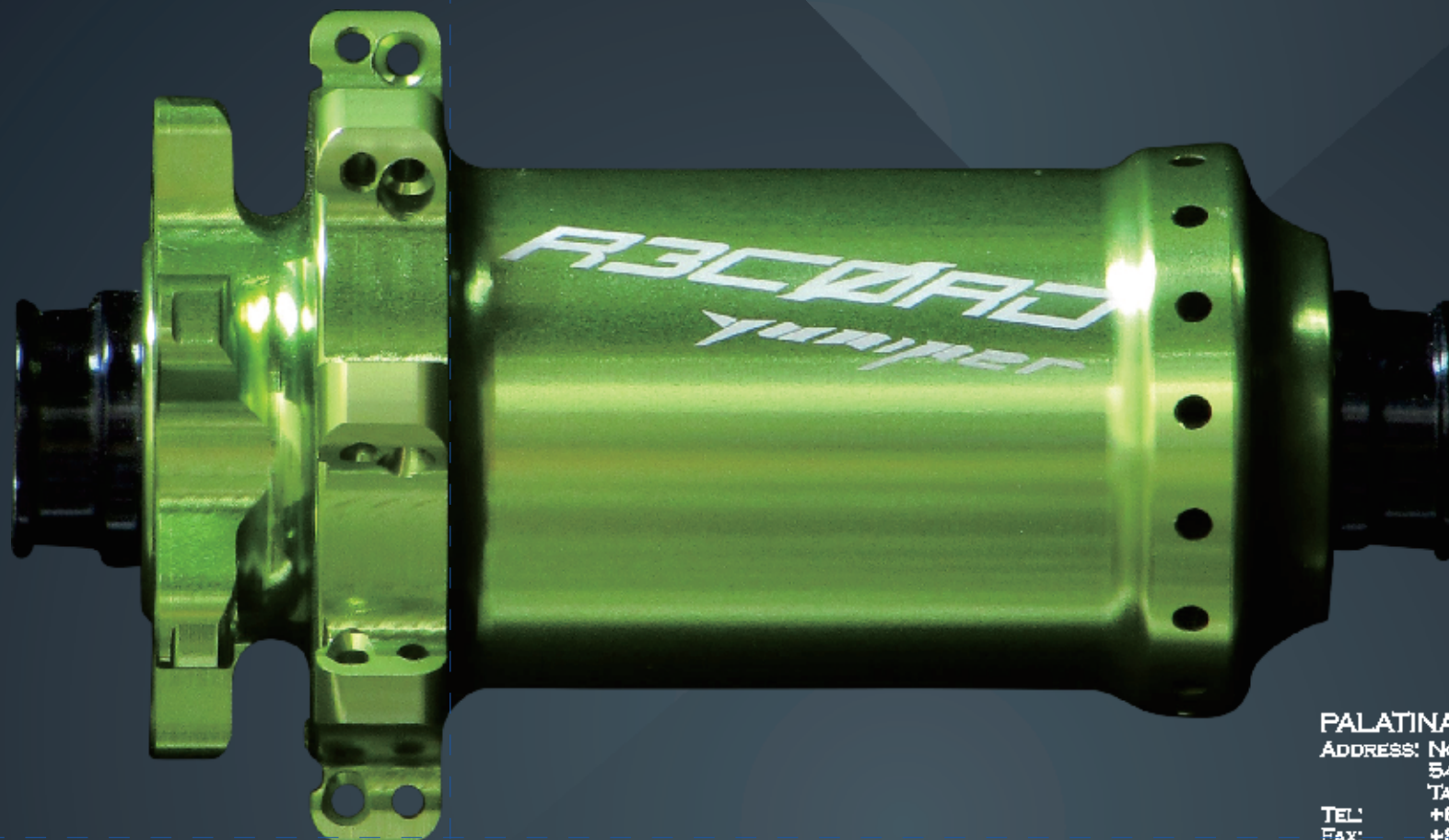
Screw Type:	Rotor Bolts	Diff. Applications	Diff. Applications
Thread:	M5	M5	M6
Head design:	PW-Flanged	PW-Flanged	PW-Flanged
Socket design:	Torx T25	4mm Hex	5mm Hex
Head diameter:	9mm	8mm	10mm
Thread length:	8mm to 12mm	8mm To 20mm	8mm To 30mm
Different Screw Diameters / Head Shapes / Thread Lengths on Request			

BY PALATINA WORKS

DOPING FOR BIKES

YUMIPET

2019



PALATINA WORKS Co., LTD.

ADDRESS: NO. 2, WEN XIAN Rd., OFFICE B447
54041 NANTOU CITY / COUNTY
TAIWAN (R.O.C.)

TEL: +886 (0) 492 317 293

FAX: +886 (0) 492 316 195

E-MAIL: INFO@PALATINA-WORKS.COM

WEB: WWW.PALATINA-WORKS.COM

www.palatina-works.com